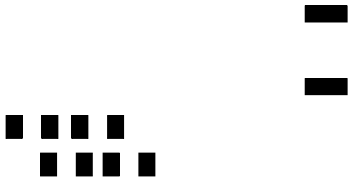
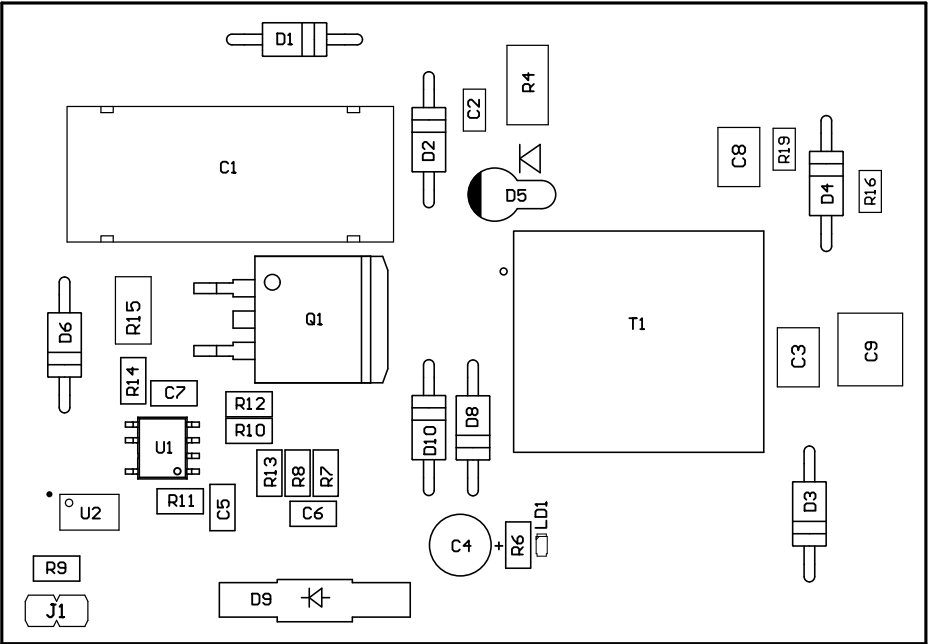


ALL ARTWORK VIEWED FROM TOP SIDE	BOARD #:TIDA-00440DB	REV: E2	SUN REV: Not In VersionControl
LAYER NAME = Top Paste			
PLOT NAME = TIDA-00440DB.GTP	GENERATED : 3/23/2015 4:42:31 PM	TEXAS INSTRUMENTS	



ALL ARTWORK VIEWED FROM TOP SIDE	BOARD #:TIDA-00440DB	REV: E2	SUN REV: Not In VersionControl
LAYER NAME = Bottom Paste			
PLOT NAME = TIDA-00440DB.GBP	GENERATED : 3/23/2015 4:42:31 PM	TEXAS INSTRUMENTS	

Z22 ■ These assemblies are ESD sensitive, ESD precautions shall be observed.
 Z23 ■ These assemblies must be clean and free from flux and all contaminants. Use of no clean flux is not acceptable.
 Z24 ■ These assemblies must comply with workmanship standards IPC-A-610 Class 2, unless otherwise specified.
 ZZ1 ■ Install label in silkscreened box after final wash. Text shall be 8 pt font. Text shall be per the Label Table in the PDF schematic.



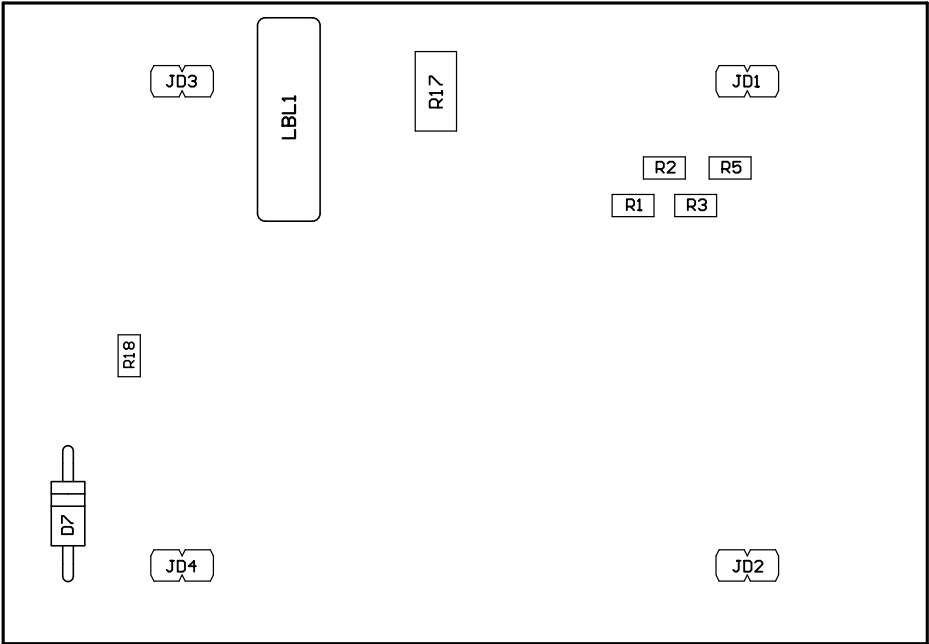
COMPONENTS MARKED 'DNP' SHOULD NOT BE POPULATED.

ASSEMBLY VARIANT: 001

PCB VIEWED FROM TOP SIDE	BOARD #: TIDA-00440DB	REV: E2	SUN REV: Not In VersionControl
IGNORE -> ASSEMBLY TOP			
PLOT NAME = TIDA-00440DB.GM5	GENERATED : 3/23/2015 4:46:26 PM	TEXAS INSTRUMENTS	

PLOT NAME = TIDA-00440DB.GMR		GENERATED : 3\23\2018 4:46:26 PM		TEXAS INSTRUMENTS	
		ASSEMBLY BOTTOM			
PCB VIEWED FROM BOTTOM SIDE		BOARD # : TIDA-00440DB		REV : ES	2ND REV: Not In VersionControl

ASSEMBLY VARIANT:
001
COMPONENTS MARKED 'DNP' SHOULD NOT BE POPULATED.





ALL ARTWORK VIEWED FROM TOP SIDE	BOARD #:TIDA-00440DB	REV: E2	SUN REV: Not In VersionControl
LAYER NAME = M1 Board Outline			
PLOT NAME = TIDA-00440DB.GM1	GENERATED : 3/23/2015 4:42:32 PM		TEXAS INSTRUMENTS